

Nightlife Remastered

INSTALL GUIDE + CUSTOMIZATION GUIDE

WANT A STEP-BY-STEP VIDEO TUTORIAL?
CLICK THIS LINK!

[HTTPS://WWW.YOUTUBE.COM/WATCH?V=DLLzFFI03Hc](https://www.youtube.com/watch?v=DLLzFFI03Hc)

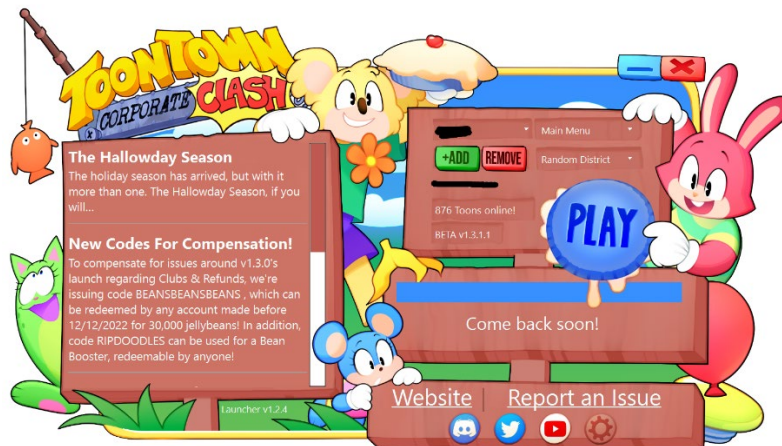
PREFER A TEXT-BASED GUIDE? CONTINUE READING!

SECTION 1: HOW TO INSTALL
SECTION 2: CUSTOMIZATION GUIDE

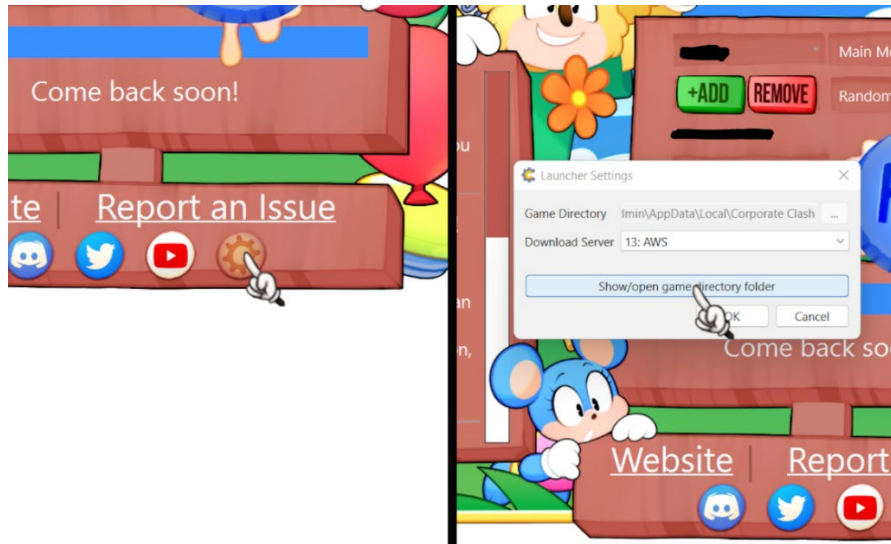
SECTION 1

HOW TO INSTALL

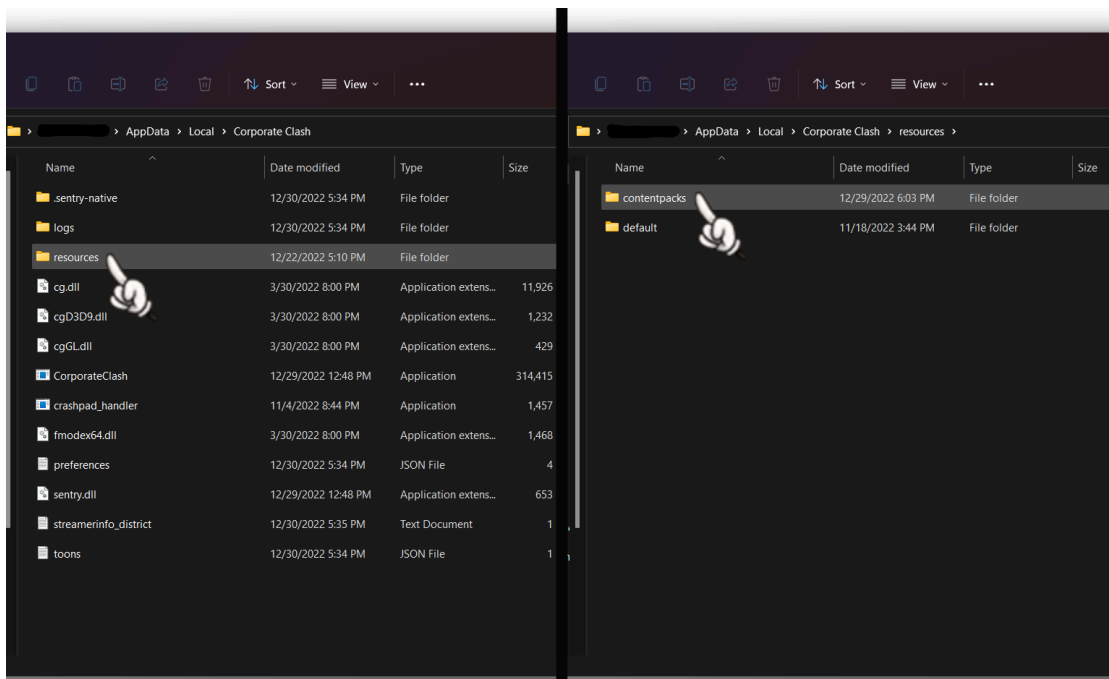
STEP 1: OPEN THE CORPORATE CLASH LAUNCHER AND LOG IN (DON'T PRESS PLAY).



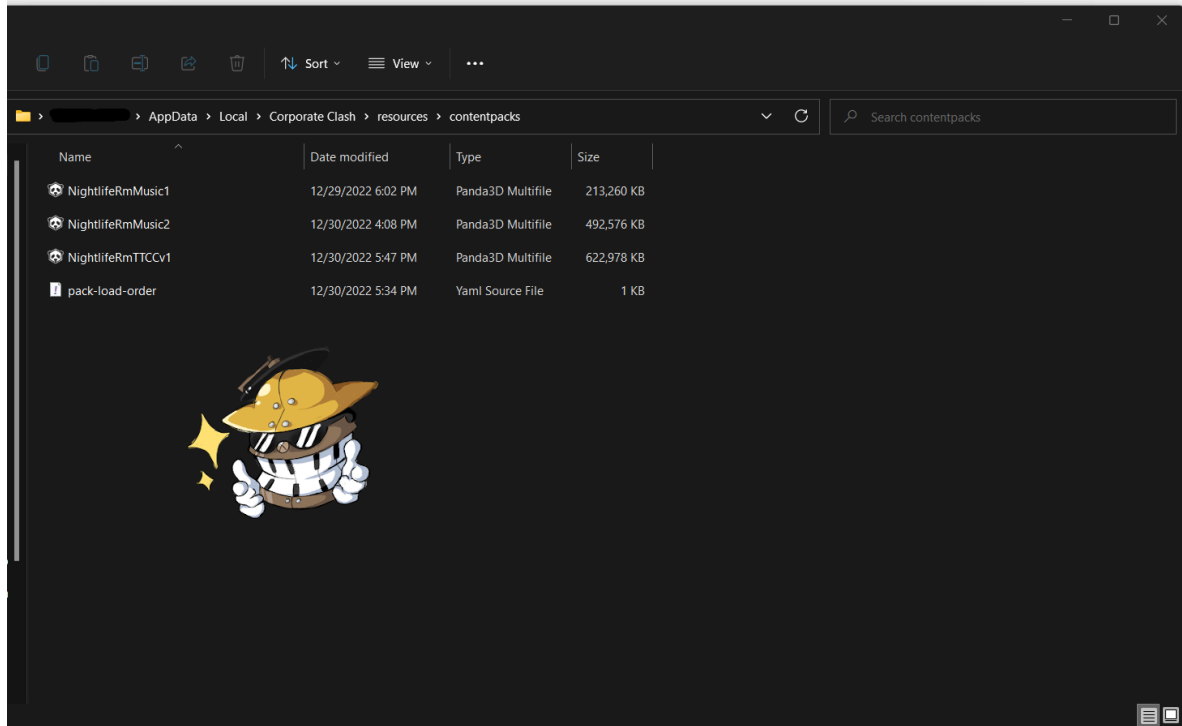
STEP 2: CLICK ON THE GEAR ICON AT THE BOTTOM OF THE LAUNCHER TO OPEN THE OPTIONS. A SMALL POP-UP SHOULD APPEAR. NEXT, CLICK THE BUTTON THAT SAYS "SHOW/OPEN GAME DIRECTORY FOLDER".



STEP 3: OPEN THE FOLDER NAMED "RESOURCES" INSIDE YOU WILL FIND TWO MORE FOLDERS. NEXT, OPEN THE FOLDER NAMED "CONTENTPACKS".



STEP 4: PLACE THE .MF FILES FOUND IN THE FOLDER NAMED "CONTENTPACK" (FOUND IN THE SAME FOLDER THIS INSTALL GUIDE IS IN) INTO THIS FOLDER.



STEP 5: LAUNCH THE GAME!

IF YOU'RE STILL CONFUSED, I RECOMMEND CHECKING OUT THE VIDEO GUIDE LINKED AT THE TOP OF THIS DOCUMENT!

SECTION 2

CUSTOMIZATION GUIDE

YOU MAY HAVE NOTICED THAT THERE ARE 5 .MF FILES INCLUDED IN THIS PACK.

"NIGHTLIFERMTTCCv1.4.MF" CONTAINS ALMOST ALL THE PACK'S TEXTURES.

THE TWO FILES NAMED "NIGHTLIFERMUSIC" CONTAIN THE PACK'S MUSIC. THE REASON THEY ARE SEPARATED IS TO GIVE YOU THE OPTION OF WHAT MUSIC YOU WOULD LIKE TO PLAY IN-GAME.

"NIGHTLIFERMSTICKERS.MF" CONTAINS THE STICKERS USED IN THE PACK. STICKERS COMMONLY BREAK AFTER A MAJOR CORPORATE CLASH UPDATE, SO REMOVE THIS FILE FROM YOUR CONTENTPACKS FOLDER IF YOU NOTICE BROKEN STICKERS AFTER AN UPDATE.

"NIGHTLIFEPURPLEUI.MF" CONTAINS THE PURPLE-COLORED UI YOU SEE IN-GAME. THIS INCLUDES THE CHAT BUTTONS, SOCIAL PANEL, SHTICKERBOOK, BATTLE UI, ETC.



NightlifePurpleUI →

Contains the packs UI.
(Social panel, shtickerbook,
battle UI, etc.)



NightlifeRmMusic1 →

Contains 25% of the packs
music. (Playgrounds, streets,
buildings, etc.)



NightlifeRmMusic2 →

Contains the other 75% of the
packs music. (Cog battle
music, cog boss music, etc.)



NightlifeRmStickers →

Contains the packs stickers.
(Remove this file if broken
after a TTCC update.)



NightlifeRmTTCCv1.4 →

Contains 99% of textures.
Most important file.

HERE IS A LIST OF WHAT MUSIC IS FOUND IN EACH MUSIC FILE:

"NIGHTLIFERMUSIC1.MF"

CONTAINS:

- **CRICKET CHIRPING AMBIENCE OVER THEME**
- **ALL PLAYGROUND MUSIC**
- **ALL PLAYGROUND STREET MUSIC**
- **ALL PLAYGROUND TOON BUILDING MUSIC**
- **ESTATE EXTERIOR AND INTERIOR MUSIC**
- **COG HQ EXTERIOR AND LOBBY MUSIC**

"NIGHTLIFERMUSIC2.MF"

CONTAINS:

- **GAG SHOP MUSIC**
- **GAG-N-GO MUSIC**
- **STREET COG BATTLE MUSIC**
- **STREET COG MANAGER BATTLE MUSIC**
- **ELEVATOR MUSIC**
- **COG BUILDING MUSIC**
- **COG HQ BATTLE MUSIC**
- **COG HQ FACILITY MUSIC**
- **COG BOSS CUTSCENE MUSIC**
- **COG BOSS BATTLE MUSIC**
- **COG BOSS VICTORY MUSIC**
- **PROBABLY MORE THAT I HAVEN'T LISTED HERE**

WANT THE ORIGINAL TOONTOWN NIGHTLIFE SOUNDTRACK?

NIGHTLIFE REMASTERED HAS A BRAND-NEW SOUNDTRACK. THE MUSIC WAS CHANGED WITH THE GOAL OF MODERNIZING THE PACK FOR THOSE WHO ARE NEW TO CONTENT PACKS. IF YOU'RE NOSTALGIC FOR THE ORIGINAL TOONTOWN NIGHTLIFE SOUNDTRACK AND WISH TO USE IT ALONGSIDE THE TEXTURES OF THIS PACK, YOU CAN DOWNLOAD IT HERE.

**DOWNLOAD LINK FOR THE ORIGINAL TOONTOWN
NIGHTLIFE SOUNDTRACK:**

**[HTTPS://DRIVE.GOOGLE.COM/DRIVE/FOLDERS/1HRMGBTTYD4
GUMDCQLIS25J14ZMYZHM?USP=SHARE-LINK](https://drive.google.com/drive/folders/1HRMGBTTYD4GUMDCQLIS25J14ZMYZHM?usp=share-link)**

HAVE ANY QUESTIONS? CONTACT ME!
(CONTACT VIA DISCORD FOR A FASTER RESPONSE TIME)

DISCORD: MOOSE#8812
TWITTER: @MOOSEPACKS

THANK YOU FOR DOWNLOADING!

